



PEBBLES and the BIGGEST NUMBER

PARTS OF A BUTTERFLY

TARGET AUDIENCE: Grade K-4

COMMON CORE STANDARDS:

- **CCSS.MATH.CONTENT.K.CC.B.4**

Understand the relationship between numbers and quantities; connect counting to cardinality.

- **CCSS.MATH.CONTENT.K.CC.B.5**

Count to answer “how many?” questions about as many as 20 things arranged in a line, a rectangular array, or a circle, or as many as 10 things in a scattered configuration; given a number from 1-20, count out that many objects.

- **CCSS.ELA.CONTENT.RI.2.5**

Know and use various text features (e.g., captions, bold print, subheadings, glossaries, indexes, electronic menus, icons) to locate key facts or information in a text efficiently.

- **CCSS.ELA.CONTENT.RI.2.7**

Explain how specific images (e.g., a diagram showing how a machine works) contribute to and clarify a text.

- **NGSS.K-2-ETS1-2**

Develop a simple sketch, drawing, or physical model to illustrate how the shape of an object helps it function as needed to solve a given problem.

ACTIVITY GOAL:

After reading Pebbles and the Biggest Number, students will label the parts of a butterfly.

LEARNING OBJECTIVE:

Students will apply knowledge of numbers and butterflies in order to label the parts of a butterfly.

the BIGGEST NUMBER

PARTS OF A BUTTERFLY



How many flowers do you see? Write the number on the space below the flowers. How many bumblebees do you see? Write the number of bumblebees below them, too.

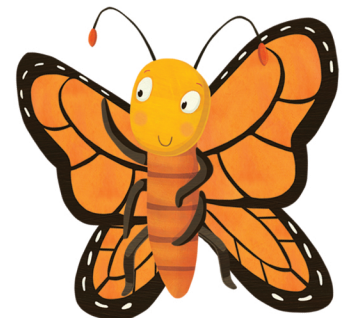


How many flowers? _____



How many bees? _____

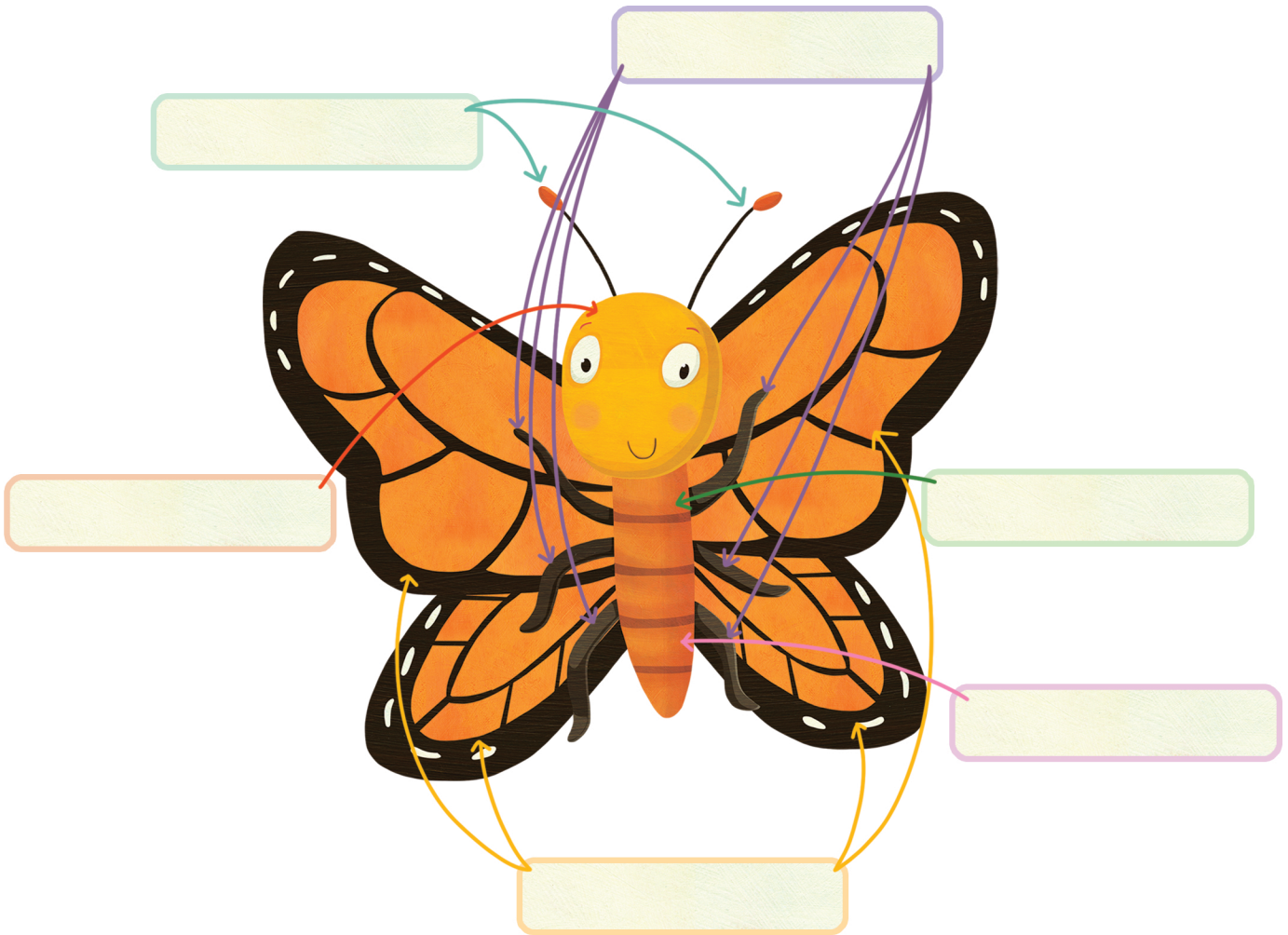
Now that we have counted some larger numbers, let's label a butterfly together!





PEBBLES and the BIGGEST NUMBER

Use the underlined words below to label Pebbles' anatomy.



Butterflies have 1 head.

Butterflies have 6 legs, 3 on each side.

Butterflies have 2 antennae on top of their heads.

Butterflies have 1 thorax, it connects their wings and legs to their body.

Butterflies have 4 wings that come in 2 pairs, the forewings and hindwings.

Butterflies have 1 abdomen which is below the thorax.

EVALUATION:

Check each label as a class or individually to ensure that students labeled each part correctly.

EXTENSION:

Students can create a poster, digital diagram, or physical model of another animal. Each animal should have at least three labeled parts.